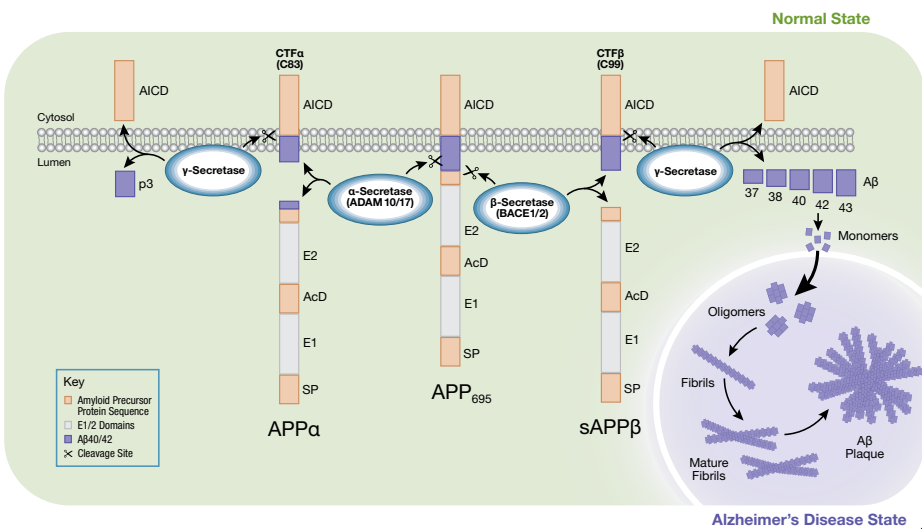
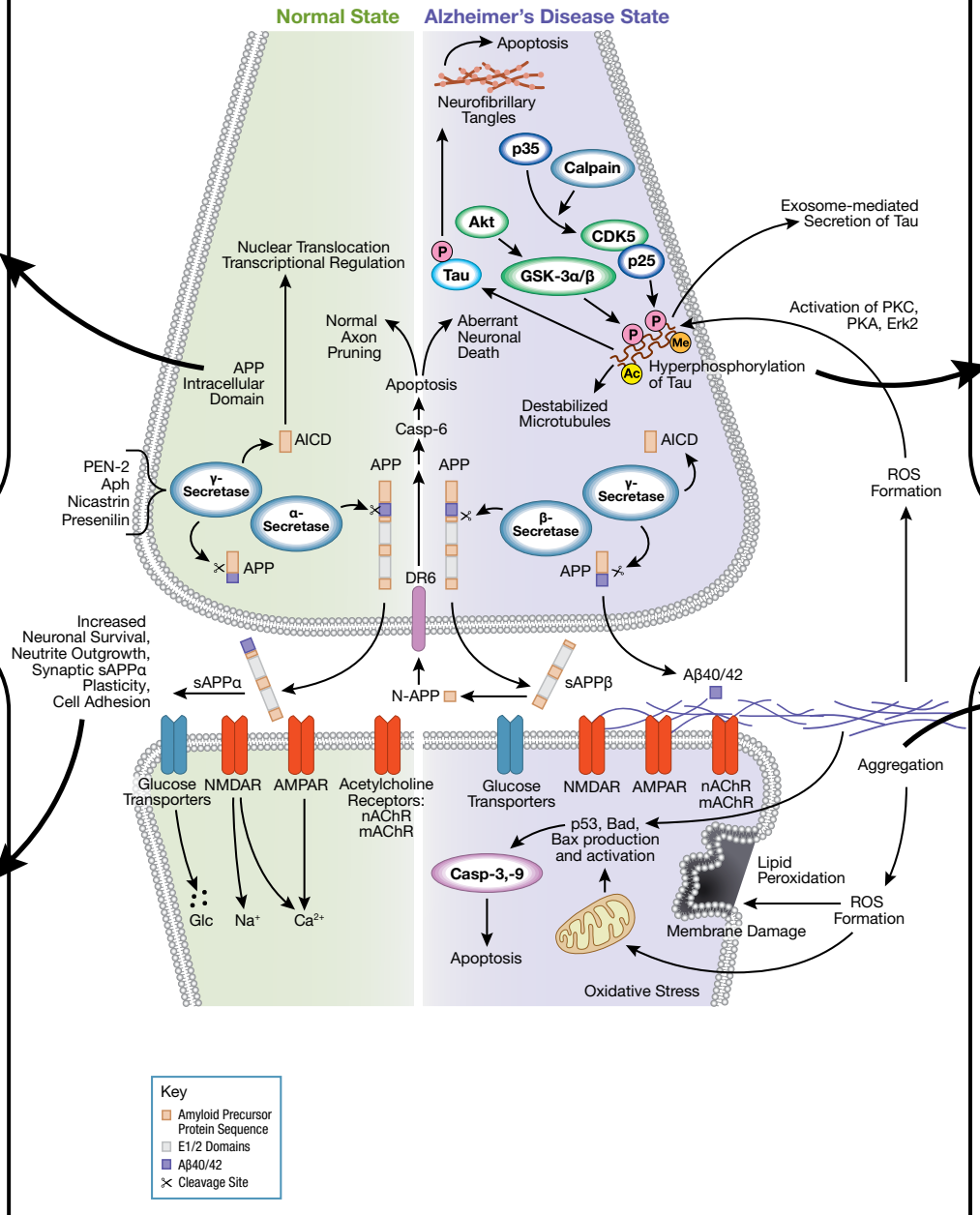


Alzheimer's Disease Signaling

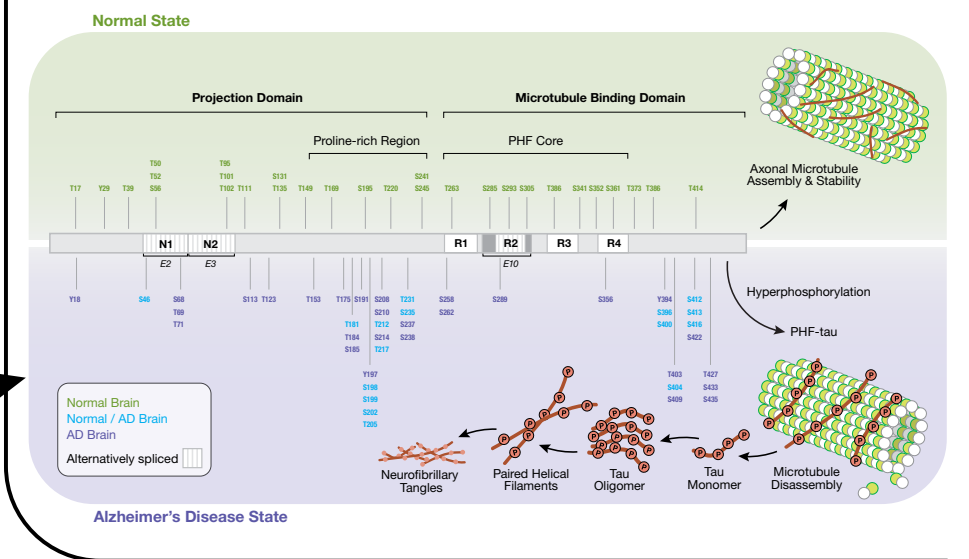
Neuronal Activity-dependent APP Processing



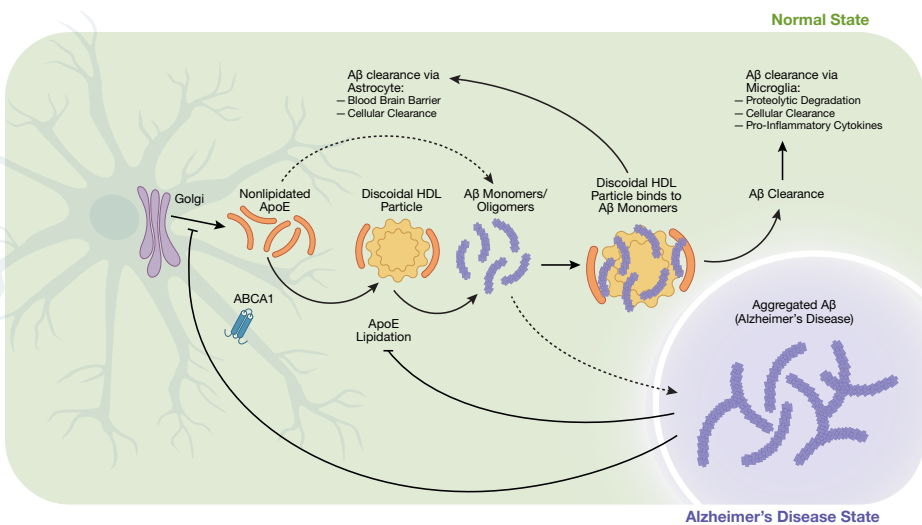
Molecular and Cellular Biology of Alzheimer's Disease



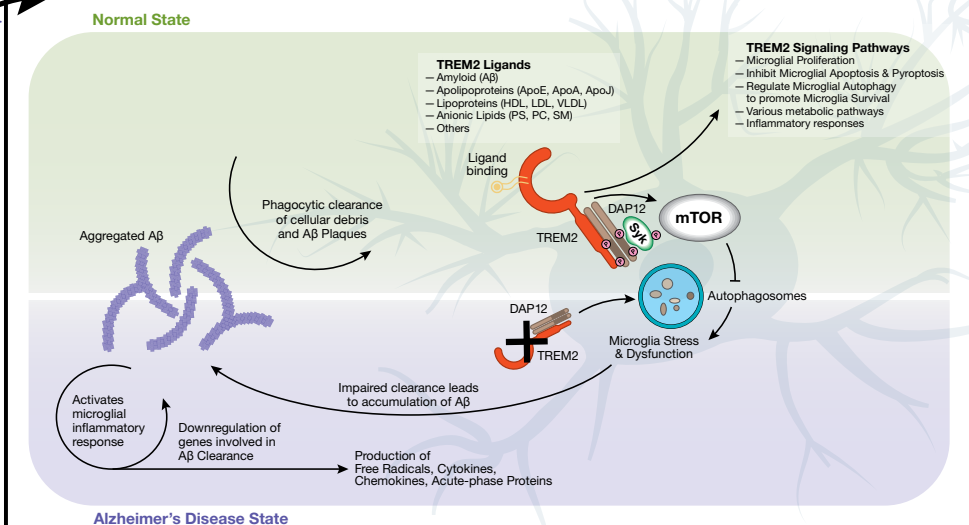
Tau Phosphorylation



Astrocytes in Neurodegeneration



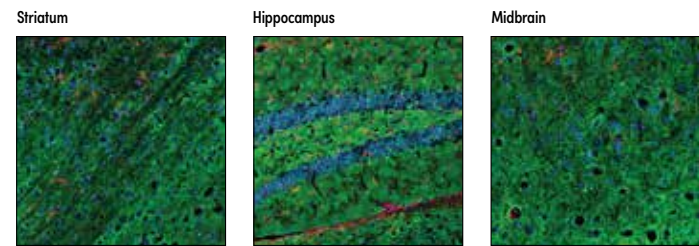
Microglia in Neurodegeneration



Key Products for Alzheimer's Disease Signaling

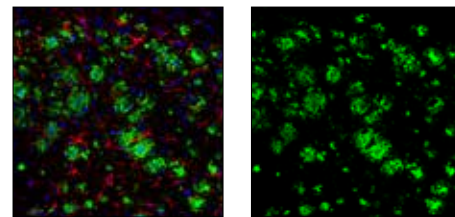
Visit www.cellsignal.com for a full listing of antibodies, related kits, and reagents.

TAU PRODUCT	APPLICATIONS	REACTIVITY
#95422	14-3-3 (pan) (E9S9M) Rabbit mAb	WB, H, M, R, Mk
#14145	CDK5 (D1F7M) Rabbit mAb	WB, IP, H, M, R, Mk
#12456	GSK-3β (D5C5Z) XP® Rabbit mAb	WB, IP, IHC, IF, F, H, M, R, Mk
#5558	Phospho-GSK-3β (Ser9) (D85E12) XP® Rabbit mAb	WB, IP, IF, F, H, M, R, Hm
#2680	p35/25 (C64B10) Rabbit mAb	WB, IP, IHC, IF, H, M, R
#4019	Tau (Tau46) Mouse mAb	WB, IHC, H, M, R, (B)
#43894	Tau (D5D8N) Rabbit mAb	WB, IP, H, M, R
#46687	Tau (D1M9X) XP® Rabbit mAb	WB, IHC, IF, H, M, R
#30328	Tau 4R Antibody	WB, H, M, R
#79327	Tau 4R (E7T4F) Rabbit mAb	WB, IP, IF, H, M, R
#20296	Phospho-Tau (Ser46) Antibody	WB, H, M, R
#29957	Phospho-Tau (Ser199) Antibody	WB, H, M, R
#39357	Phospho-Tau (Ser202) (D4H7E) Rabbit mAb	WB, H, M, R
#30505	Phospho-Tau (Ser202/Thr205) (E6S2W) Rabbit mAb	WB, H, M, R
#77348	Phospho-Tau (Ser214) (D1Q2X) Rabbit mAb	WB, IP, H, M, R
#9632	Phospho-Tau (Ser396) (PHF13) Mouse mAb	WB, M, R, (H)
#15013	Phospho-Tau (Ser416) (D7U2P) Rabbit mAb	WB, IP, IHC, H, M, R
#35834	Phospho-Tau (Ser404) (D2Z4G) Rabbit mAb (IHC preferred)	WB, IHC, H, M, R
#20194	Phospho-Tau (Ser404) (D2Z4G) Rabbit mAb (IF preferred)	WB, IP, IF, H, M, R
#12885	Phospho-Tau (Thr181) (D9F4G) Rabbit mAb	WB, IP, IHC, IF, H, M, R
#49561	Phospho-Tau (Thr205) (E7D3E) Rabbit mAb	WB, IP, IHC, IF, H, M, R
#71429	Phospho-Tau (Thr231) Antibody	WB, IP, H, M, R
#9784	Alzheimer's Disease Antibody Sampler Kit	
#90554	FastScan™ Phospho-Tau (Ser416) ELISA Kit	
#57519	FastScan™ Total Tau ELISA Kit	
#58537	FastScan™ Phospho-Tau (Thr181) ELISA Kit	
#59672	PathScan® Phospho-Tau (Thr217) Sandwich ELISA Kit	
#42521	LRP1-mediated Endocytosis and Transmission of Tau Antibody Sampler Kit	
#74113	Pathological Hallmarks of Alzheimer's Disease Antibody Sampler Kit	
#82577	PhosphoPlus® Tau (Ser404) Antibody Duet	
#56285	PhosphoPlus® Tau (Ser396) Antibody Duet	
#14511	PhosphoPlus® Tau (Thr181) Antibody Duet	
#96628	Phospho-Tau Family Antibody Sampler Kit	

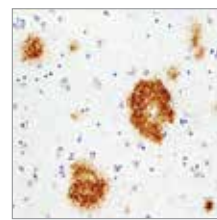


Tau (D1M9X) XP® Rabbit mAb #46687: Confocal IF analysis of mouse striatum (left), hippocampus (middle), or midbrain (right) using #46687 (green) and GFAP (GA5) Mouse mAb #3670 (red). Blue pseudocolor = DRAQ5® #4084 (fluorescent DNA dye).

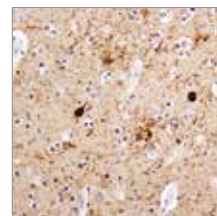
APP PRODUCT	APPLICATIONS	REACTIVITY
#8243	β-Amyloid (D54D2) XP® Rabbit mAb	WB, IP, IF, H
#12467	β-Amyloid (1-37) (D2A6H) Rabbit mAb	WB, H
#12077	β-Amyloid (1-39) (D5Y9L) Rabbit mAb	WB, H
#12990	β-Amyloid (1-40) (D8Q7I) Rabbit mAb	WB, IF, H, (M, R, Mk, B)
#14974	β-Amyloid (1-42) (D9A3A) Rabbit mAb	WB, IF, H, (M, R)
#24090	β-Amyloid (1-42) (E6D5M) Rabbit mAb	IHC, IF, H
#32098	β-Amyloid (1-43) (E8C2D) Rabbit mAb	WB, IF, H, (M)
#14975	β-Amyloid (pE3 Peptide) (D5N5H) Rabbit mAb	WB, IHC, IF, H
#29765	APP (E8B3O) XP® Rabbit mAb	WB, IP, IHC, H
#76600	APP (E4HIU) Rabbit mAb	WB, IP, H, M, R
#6986	Phospho-APP (Thr668) (D90B8) Rabbit mAb	WB, IP, H, M, R
#3858	APPL1 (D83H4) XP® Rabbit mAb	WB, IP, IF, H, M, R, Mk
#5606	BACE (D10E5) Rabbit mAb	WB, IP, IF, H, M, R
#20882	FastScan™ β-Amyloid (1-40) ELISA Kit	
#27029	PathScan® β-Amyloid (1-42) Sandwich ELISA Kit	
#9784	Alzheimer's Disease Antibody Sampler Kit	
#8652	AMPA Receptor (GluA) Antibody Kit	
#85314	β-Amyloid Antibody Sampler Kit	
#41608	β-Amyloid Mouse Model Neuronal Viability IF Antibody Sampler Kit	
#13593	Intracellular Flow Cytometry Kit (Methanol)	
#51995	Intracellular Flow Cytometry Kit (Triton™ X-100)	
#74113	Pathological Hallmarks of Alzheimer's Disease Antibody Sampler Kit	
#5887	γ Secretase Antibody Sampler Kit	
#9765	Vesicle Trafficking Antibody Sampler Kit	



β-Amyloid (D54D2) XP® Rabbit mAb #8243: Confocal IF analysis of mouse subicular cortex from the 5XFAD mouse model of Alzheimer's disease using #8243 (green) and GFAP (GA5) Mouse mAb #3670 (red). Samples were mounted in ProLong® Gold Antifade Reagent with DAPI #8961 (blue).



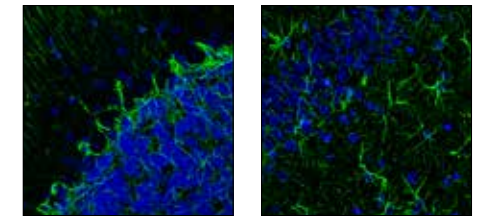
β-Amyloid (pE3 Peptide) (D5N5H) Rabbit mAb #14975: IHC analysis of paraffin-embedded human Alzheimer's brain using #14975.



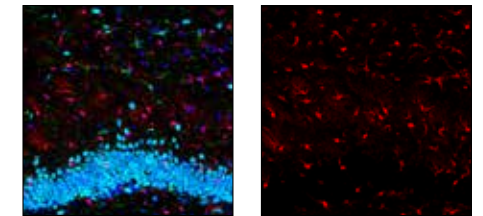
Phospho-Tau (Thr181) (D9F4G) Rabbit mAb #12885: IHC analysis of paraffin-embedded human Alzheimer's brain using #12885.

MICROGLIA PRODUCT	APPLICATIONS	REACTIVITY
#39327	ApoE4 (E5M4L) Rabbit mAb	WB, IHC, H
#13366	ApoE (pan) (D7I9N) Rabbit mAb	WB, IP, IHC, IF, H
#68587	ApoE Antibody	WB, IP, M, R
#67824	ASC/TMS1 (D2W8U) Rabbit mAb (Mouse Specific)	WB, IP, IHC, IF, F, M
#31718	Cathepsin B (D1C7Y) XP® Rabbit mAb	WB, IHC, IF, F, H, M, R
#69854	Cathepsin D (E179) Antibody	WB, IF, H, M, R
#17800	CD11b/ITGAM (E6E1M) Rabbit mAb	WB, IP, IF, M
#49420	CD11b/ITGAM (D6X1N) Rabbit mAb	WB, IHC, H
#97778	CD68 (E3O7V) Rabbit mAb	WB, IHC, IF, M
#13917	CD45 (Intracellular Domain) (D9M8I) XP® Rabbit mAb	WB, IP, IHC, IF, F, H
#60059	Complement C4-A/C4-B (E6J7W) Rabbit mAb	WB, H, R
#12492	DAP12 (D7G1X) Rabbit mAb	WB, IP, H, M, (Mk, B, Dg)
#46088	DAP12 (E8P9U) Rabbit mAb	IHC, H
#30325	F4/80 (D4C8V) XP® Rabbit mAb	WB, IP, IF, M
#38313	GPINMB (E4D7P) XP® Rabbit mAb	WB, IP, IHC, H
#90205	GPINMB (E7U1Z) Rabbit mAb	WB, IF, F, M
#3890	HS1 (D83A8) XP® Rabbit mAb (Human Specific)	WB, IP, IHC, IF, F, H
#3892	HS1 (D5A9) XP® Rabbit mAb (Rodent Specific)	WB, IP, IHC, IF, F, M, R
#17198	Iba1/AIF-1 (E4O4W) XP® Rabbit mAb	WB, IP, IHC, IF, F, H, M, R
#2258	PU.1 (9G7) Rabbit mAb	WB, IP, IHC, IF, F, H, M
#13198	Syk (D321E) XP® Rabbit mAb	WB, IP, IHC, F, H, M, R
#2710	Phospho-Syk (Tyr525/526) (C87C1) Rabbit mAb	WB, IP, IF, F, H, (M, R)
#41134	TMEM119 (E3E4T) Mouse mAb	IHC, H
#90840	TMEM119 (E3E1O) Rabbit mAb	IF, M (H)
#91068	TREM2 (D8I4C) Rabbit mAb	WB, IP, IF, H
#61788	TREM2 (E6T1P) Rabbit mAb (Amino-terminal Antigen, Mouse Specific)	WB, M
#76765	TREM2 (E7P8) Rabbit mAb (Carboxy-terminal Antigen, Mouse Specific)	WB, M
#70551	TREM2 (E9U8L) Rabbit mAb (Amino-terminal Antigen)	WB, H
#8954	Phospho-Tyrosine (P-Tyr-1000) MultiMab™ Rabbit mAb	WB, IP, IF, F, All
#2717	Phospho-Zap-70 (Tyr319)/Syk (Tyr352) (65E4) Rabbit mAb	WB, IF, F, H, M, (R, Hm, C, B, Dg, Pg, Hr)
#92516	ApoE Synaptic Formation and Signaling Pathway Antibody Sampler Kit	
#23831	FastScan™ Total TREM2 ELISA Kit	
#83163	Microglia Cross Module Antibody Sampler Kit	
#19171	Microglia Interferon-Related Module Antibody Sampler Kit	
#36422	Microglia LPS-Related Module Antibody Sampler Kit	
#93195	Microglia Neurodegeneration Module Antibody Sampler Kit	
#49938	Microglia Proliferation Module Antibody Sampler Kit	
#90298	Mouse Microglia Marker IF Antibody Sampler Kit	
#30182	Mouse Reactive Alzheimer's Disease Model Microglia Phenotyping IF Antibody Sampler Kit	
#77533	TREM2 Signaling Pathways Sampler Kit	
#78863	TREM2-dependent mTOR Metabolic Fitness Antibody Sampler Kit	

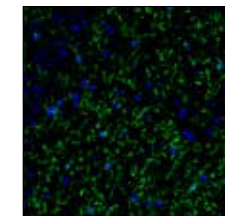
ASTROCYTES PRODUCT	APPLICATIONS	REACTIVITY
#96292	ABCA1 (E7X5G) Rabbit mAb	WB, IP, H, M, R
#32942	ABCA7 (E7O5A) Rabbit mAb	WB, IP, M, R
#31954	ABCA7 Antibody (Mouse Specific)	WB, IP, M
#85828	ALDH1L1 (E712Q) Rabbit mAb	WB, IP, IF, H, M, R
#59678	AQP4 (D1F8E) XP® Rabbit mAb	WB, IP, IHC, IF, H, M, R
#5684	EAAT2 (D44E2) XP® Rabbit mAb	WB, IP, IF, H, M, R
#20848	EAAT2 (E3P5K) Rabbit mAb	WB, IF, H, M, R
#37342	GAT1 (E7J1B) Rabbit mAb	WB, IP, IF, H, M, R
#3670	GFAP (GA5) Mouse mAb	WB, IHC, IF, F, H, M, R
#80788	GFAP (E4L7M) XP® Rabbit mAb	WB, IHC, IF, H, M, R
#90393	S100B (E7C3A) Rabbit mAb	WB, IHC, IF, H, M, R
#2808	Survivin (71G4B7) Rabbit mAb	WB, IP, IHC, IF, F, H, M, R
#39327	ApoE4 (E5M4L) Rabbit mAb	WB, IHC, H
#13366	ApoE (pan) (D7I9N) Rabbit mAb	WB, IP, IHC, IF, H
#68587	ApoE Antibody	WB, IP, M, R
#92516	ApoE Synaptic Formation and Signaling Pathway Antibody Sampler Kit	
#50748	Astrocyte Markers Antibody Sampler Kit	



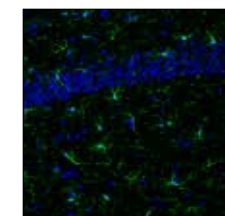
GFAP (E4L7M) XP® Rabbit mAb #80788: Confocal IF analysis of adult mouse cerebellum (left) and hippocampus (right) using #80788 (green). Samples were mounted in ProLong® Gold Antifade Reagent with DAPI #8961 (blue).



S100B (E7C3A) Rabbit mAb #90393: Confocal IF analysis of fixed frozen mouse hippocampus using #90393 (red). After blocking free secondary binding sites with Rabbit (DAIE) mAb IgG XP® Isotype Control #3900, sections were incubated with HS1 (D5A9) XP® Rabbit mAb (Rodent Specific) (Alexa Fluor® 488 Conjugate) #68206 (green), NeuN (D4G4O) XP® Rabbit mAb (Alexa Fluor® 647 Conjugate) #62994 (cyan pseudocolor), and ProLong® Gold Antifade Reagent with DAPI #8961 (blue).



TMEM119 (E3E1O) Rabbit mAb #90840: Confocal IF analysis of wild-type mouse brain using #90840 (green). Sections were mounted in ProLong® Gold Antifade Reagent with DAPI #8961 (blue).



Iba1/AIF-1 (E4O4W) XP® Rabbit mAb #17198: Confocal IF analysis of microglia in mouse hippocampus using #17198 (green). Sections were mounted in ProLong® Gold Antifade Reagent with DAPI #8961 (blue).