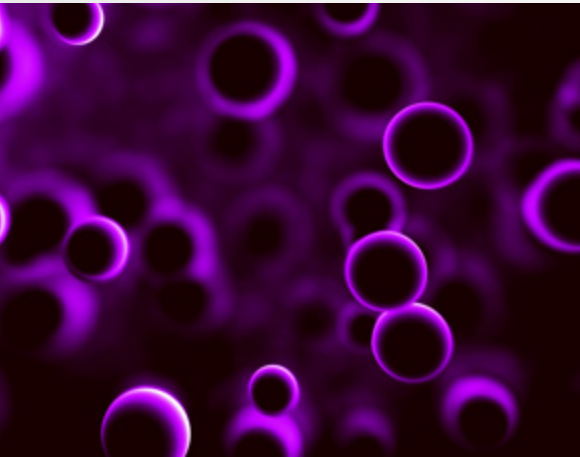




GeneProof[®]

GeneProof Mycoplasma genitalium/hominis PCR Kit



MORE INFORMATION WITH LESS SAMPLES

- Enables to distinguish *Mycoplasma hominis* from *Mycoplasma genitalium* using 3-channel system

SIMPLE LABORATORY WORKFLOW

- Easily combinable with other GeneProof PCR kits in one workflow

HIGH SENSITIVITY

- Secured by targeting the multicopy sequence of the 16S rRNA gene of *Mycoplasma genitalium*

CONTAMINATION PREVENTION

- Master Mix contains Uracil-DNA glycosylase (UNG) and dUTPs eliminating carryover contamination

ORDER INFORMATION

REF	PACKAGE
MGH/ISEX/025	25 reactions
MGH/ISEX/100	100 reactions



COMPATIBLE WITH A WIDE RANGE OF REAL-TIME PCR DEVICES



CERTIFIED DIAGNOSTIC TEST



GeneProof Mycoplasma genitalium/ hominis PCR Kit

- + GeneProof Chlamydia trachomatis PCR Kit
 - + GeneProof Neisseria gonorrhoeae PCR Kit
 - + GeneProof CT/NG/MG Multiplex PCR Kit
 - + GeneProof Gardnerella vaginalis PCR Kit
 - + GeneProof MH/UU/UP Multiplex PCR Kit
 - + GeneProof Mycoplasma genitalium/hominis PCR Kit
 - + GeneProof Ureaplasma PCR Kit
 - + GeneProof Herpes Simplex Virus (HSV-1/2) PCR Kit
 - + GeneProof Trichomonas vaginalis PCR Kit
 - + GeneProof Treponema pallidum PCR Kit
- FOR SCREENING PURPOSES**
- + GeneProof Human Papillomavirus (HPV) Screening PCR Kit

INDICATION	<i>in vitro</i> diagnostic medical device
REGULATORY STATUS	CE IVD
INTENDED USER	For professional use in laboratories with trained staff
TECHNOLOGY	Real-time PCR
TYPE OF ANALYSIS	Qualitative
TARGET SEQUENCE	A multicopy sequence of the gene encoding the 16S rRNA (<i>M. genitalium</i>) and the housekeeping <i>gap</i> gene for glyceraldehyde-3-phosphate dehydrogenase (<i>M.hominis</i>)
ANALYTICAL SPECIFICITY	<i>M. genitalium</i> , 100 % <i>M. hominis</i> , 100 %
ANALYTICAL SENSITIVITY (LoD)	Reaches up to 1.256 cp/μl with the probability of 95 % for <i>M. genitalium</i> Reaches up to 1.196 cp/μl with the probability of 95 % for <i>M. hominis</i>
EXTRACTION/INHIBITION CONTROL	PCR inhibition and DNA extraction efficiency control
VALIDATED SPECIMEN	Swab, urine
STORAGE	-20 ± 5 °C
VALIDATED EXTRACTION METHODS	croBEE 201A Nucleic Acid Extraction System GeneProof PathogenFree DNA Isolation Kit
INSTRUMENTS	croBEE Real-Time PCR System AriaMx Real-Time PCR System CFX Connect™ / CFX96™/ Dx Real-Time PCR Detection System LineGene 9600 / 9600 Plus Mic qPCR Cycller Rotor-Gene 3000 / 6000 / Q QuantStudio™ 3 / 5 Real-Time PCR System StepOne™ / StepOnePlus™ Real-Time PCR System SLAN® Real-Time PCR System
REQUIRED DETECTION CHANNELS	FAM, HEX, Cy5
EXTERNAL QUALITY ASSESSMENT	Regularly tested in QCMD and Instand e.V. External Quality Assessment Panels - results at www.geneproof.com